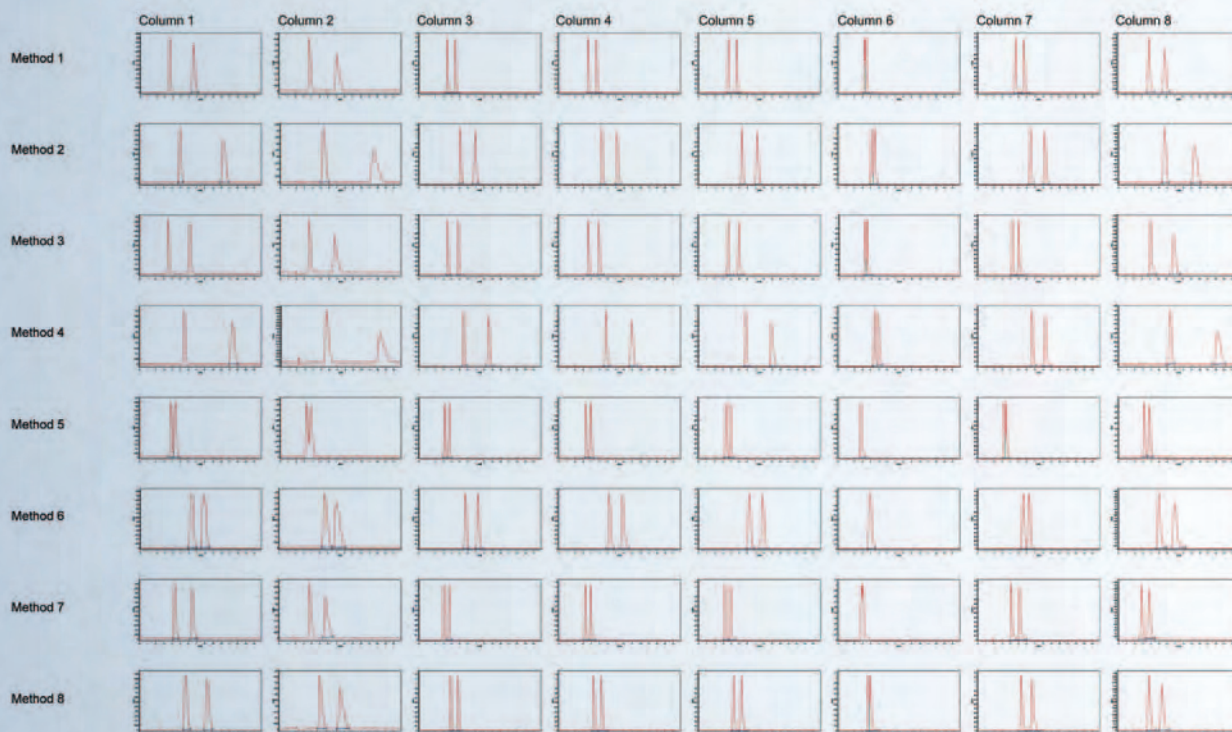


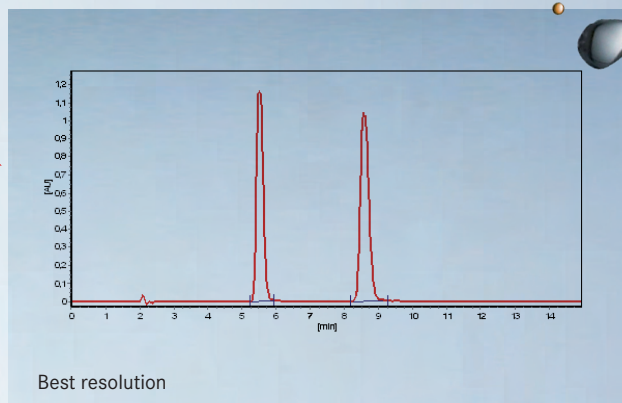
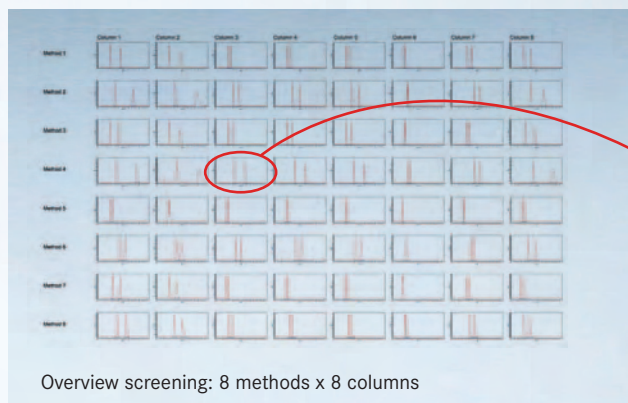
8x Parallel SFC

Supercritical Fluid Chromatography even faster



sepiatec
SEPARATION INNOVATION AUTOMATION

THE NEW SEPMATIX SFC



The new **Sepmatix SFC** 8x parallel system combines Sepiatec's proven parallel HPLC technology with the advantages of supercritical fluid chromatography.

The result is the first SFC system with eight separating columns working in parallel, high operating speed and as yet unmatched performance.

In a space of only a few minutes for example enantiomers can be separated on eight different chiral columns at the same time. The automatic variation of the eluents makes it possible to determine the optimal chiral separation in a significantly shorter time than was previously possible.

The superb **Chiral Column Screening Wizard** software clearly displays the separations achieved in up to 80 chromatograms at the same time. The separation with the best peak resolution is immediately discernible. The software considerably reduces the amount of time the user needs

for the selection process. The overview display is extremely suitable for presentations.

As far as the Sepmatix SFC system's technical features are concerned, only one CO₂ pump and one modifier pump are needed. Using Sepiatec's patented FlowControl the flow is divided into eight channels and regulated exactly by electronically controlled valves.

A backpressure regulator, an autosampler, an eight channel diode array detector and a column oven for heating or for cooling purposes are part of the standard equipment. With minor modifications the Sepmatix SFC system is also suited to chromatography using organic solvents.

On request, a **Sepmatix** software module is available that can **automatically identify the best separations**, and which can relay the applications and columns to an automated preparative system.

Technical Data:

- Operating mode: Up to 8 analytical columns in parallel
- Solvents: CO₂ and organic solvents
- Number of solvents: Up to 18 solvents with Sepmatix Solvent SelectionRack
- CO₂ pump: 100 ml head, 400 bar
- Modifier pump: 100 ml head, 400 bar
- Operating pressure: Up to 300 bar, adjustable online backpressure control
- Flow control: 8x Sepmatix FlowControl, 3 - 6 ml/min supercritical fluid per channel
- Injection: Total loop
- Columns: Suitable columns, up to 250 mm length, any vendor
- Column oven: 10° - 80° C
- Detection: Diode array detector, 8x10 mm flow cells, pressure stable
- Software: Sepmatix Control Software, Chiral Column Screening Wizard Software
- Method development: Upscaling with automated identification of best separation (on request)
- Dimensions: 70 x 55 x 95 cm (W x D x H) with column oven

Sepiatec GmbH
Louis-Blériot-Strasse 5
12487 Berlin
Germany

Phone: +49 30 63 22 34 0
Fax: +49 30 63 22 34 10
info@sepiatec.com
www.sepiatec.com



sepiatec
SEPARATION | INNOVATION | AUTOMATION